

Quick Guide - Activating Remote Control (WLAN hotspot/access point)

The integrated WLAN hotspot is used to connect directly to the device. The device can be operated using a web browser (mobile phone or PC). The remote control is deactivated by default. The remote control is activated in the settings menu (parameter screen) under menu item Remote control #1271 (Main menu/Remote Access)

1. Activating Remote Control

Step 1: Access settings menu

A long press (approx. 3 seconds) on the "Ok" button takes you to the settings menu. Please note that the access level is briefly displayed when the menu is opened. Within the "Access rights 2" level, the user can make all the necessary system settings. ¹

Step 2: Menu

Use the arrow buttons (up/down) to move the cursor to the "Remote Access" menu item. Then click the "Ok" button.

```

Main menu      #1270
Limits>
Remote Access>
Network>
    
```

Step 3: Activating the remote control function

Use the arrow buttons (up/down/left/right) to change the function to "On". After changing the setting, exit the menu item with the "Ok" button.

```

PARAMETER     #1271
Remote Access
On
    
```

After activating the remote control, two further menu items are available:

WLAN Server SSID:

Defines the SSID of the WLAN hotspot. The name cannot be changed (SSID is made up of WLAN_GDR_00 plus serial number (XXXX), each device is uniquely identifiable).

```

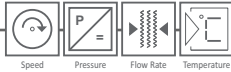
Remote Access #1271
Remote Access On
WLAN_GDR_001140
WLAN_server*****
    
```

WLAN server password:

A new password for the device's Wi-Fi hotspot can be assigned here (passwords cannot contain spaces).

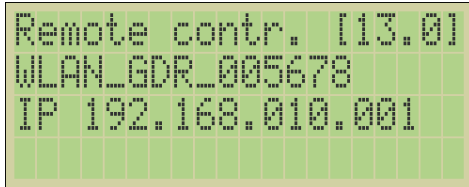
Factory password: 12345678

¹ A PIN code (PIN1) can be defined to protect the parameters. The PIN assigned at the factory is: 10000. The factory-defined PIN code means that the device is "open" and therefore access to the parameter settings is not protected.



2. Remote control of the device via web browser (WLAN hotspot)

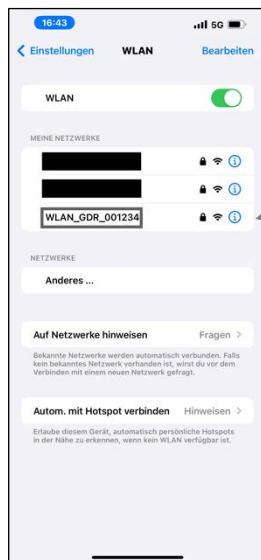
If the "Remote control [13.0]" LIVE screen is displayed, the remote control is active.



The SSID of the WLAN hotspot is displayed in line 2 .
Line 3 shows the IP address for accessing the device's website.

2.1. Connecting to WLAN hotspot (mobile devices)

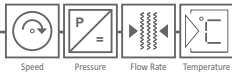
Connect your mobile device to the device hotspot "WLAN_GDR_00xxxx" (example: WLAN_GDR_001234). The factory default password is "12345678". If the connection is successful, your mobile device may display a message such as "No Internet connection" or "Unsecured network". However, this is irrelevant for remote control, as only direct access to the device is required. The GDR 1530 G2 automatically assigns an IP address to the connected end device. This is located in the IP range 192.168.4.x by default. The IP address of the GDR 1530 G2 is 192.168.4.1 by default.



WLAN SSID:
WLAN_GDR_001234

IP address of mobile device:
192.168.4.2

IP address GDR 1530 G2:
192.168.4.1 (router)

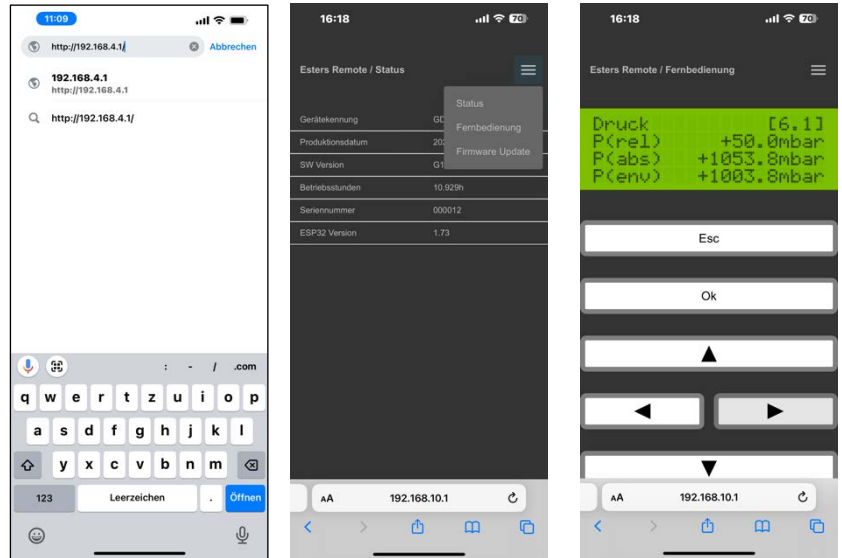


2.2. Remote control via web browser: WLAN hotspot

Open the web browser on your mobile device and enter the URL `http://192.168.4.1` (or the router IP address from the WLAN connection). The website of the device will then open.

The IP address can also be read on the live screen remote control (LIVE Screen [13.0] remote control line 3).

After successfully entering the URL, the status page of the device is displayed. The hamburger menu in the top right-hand corner takes you to the page for remote control of the device. The operation is similar to the operation on the keyboard.



3. Remote control via web browser: WLAN connection in your own network

3.1. Integration into the WLAN network

Step 1: Access settings menu

Press and hold the "Ok" button (approx. 3 seconds) to access the settings menu.

Step 2: Menu

Use the arrow buttons (up/down) to move the cursor to the "Network" menu item. Then click the "Ok" button.

In the menu item "Network→ type", select the type "WLAN".

After activating the WLAN connection, three further menu items are available:

DHCP

DHCP enabled in the network yes or no

If DHCP is not enabled in the network, a fixed IP address must also be added to the device as well as gateway and DNS server information.

```

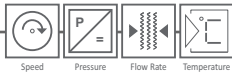
Main menu      #2940
Remote Access>
Network>
System>
    
```

```

PARAMETER     #2945
Type
WLAN
    
```

```

WLAN          #2951
DHCP          On
WLAN=WLAN_ClientSSID
WLAN=*****
    
```



SSID of the WLANS:

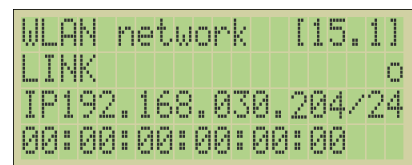
Enter the SSID of the WLAN to which the device is to be added (WLAN SSIDs must not contain spaces).

WLAN client password:

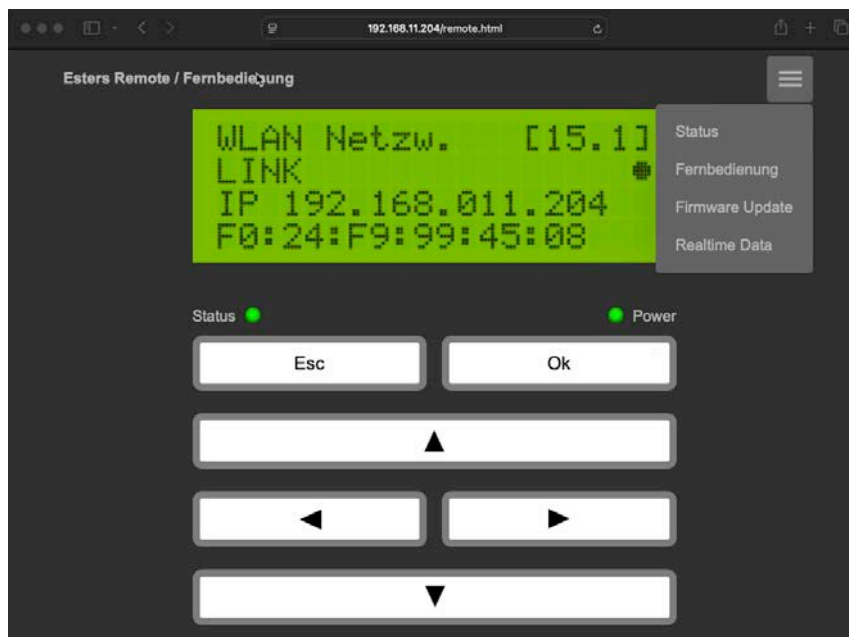
Enter the password of the SSID of the WLAN to which the device is to be added (passwords must not contain spaces).

3.2. Remote control via web browser: WLAN network²

The IP address for access via web browser can be found in the respective LIVE screen (WLAN network [15.1] in the 3rd line. Enter this IP address in the web browser.



Rev. no.: GDR15xx-IFC 16xx-QG 336 RC E-Remote-Control-V0.1-2025-02-21.docx



From ESP32 version no. 1.95, the navigation elements can also be controlled via the keyboard. The arrow keys on the keyboard are used to control the navigation arrows (arrow buttons), the Enter key for the Ok button and the Backspace key for the Esc button.

² The "Remote access" function must be activated.